

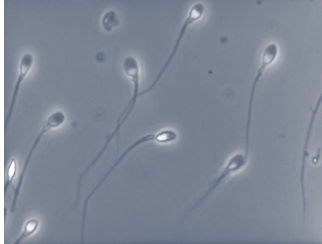


American Society of Andrology

Andrology Laboratories Committee Announces the: 2012 Andrology Laboratory Workshop

Saturday, April 21, 2012
(8:30 a.m. – 4:30 p.m.)
Sunday, April 22, 2012
(8:00 a.m. – 12:00 p.m.)

Hilton Tucson El Conquistador
Tucson, Arizona



Andrology Lab Workshop 2012 “Sperm Morphology: Interactive Instruction of a New Rational Classification Method”

The Andrology Laboratory Workshop Committee will present a new method for classifying sperm morphology by Strict and non-Strict criteria. Using our successful format of unique, “hands-on” interactive exploration of virtual smears, this year’s workshop will teach a novel and rational method to identify normal, borderline and abnormal sperm shapes and obtain results for the two most popular morphology schemes used by fertility specialists today: Tygerberg Strict Criteria, described in the WHO 5th Edition, Manual on Examination of Human Semen, and non-Strict methods where borderline forms are considered normal. Pitfalls and problems of overly stringent classification will be directly addressed and methods for detecting them will be provided. Reference ranges and limits will be described.

Overview

The workshop will begin with an overview of sperm morphology classification including its history, relationship to fecundity, the rationale for different morphology schemes, and the downward trend of percent normal. A new method based on a tested deterministic algorithm will be presented. Experts will demonstrate how the method can simultaneously produce results for Strict and non-strict systems. Sperm images from stained semen smears will be projected onto the classroom screen for analysis and the faculty will classify each sperm, while discussing classification rationale for each image. Participants will analyze images in real time using an audience response system, then practice on their own with virtual smears throughout the course of the workshop. Common problems in morphology analysis will be discussed along with quality control and assurance techniques to detect and prevent them, including construction of QC control charts.

The day and a half workshop will use state of the art audience response tools to make the sessions hands-on and interactive. Participant responses will be compared to the extensive WHO 5th Manual examples to make this a unique and informative learning opportunity. During the day and a half workshop, participants will use interactive and virtual learning techniques to learn and practice morphology classification skills.

Learning Objectives

At the conclusion of the Andrology Lab Workshop, participants should be able to:

- Identify the history of sperm morphology and its clinical significance
- Use a rational decision algorithm to perform sperm classification assessments using Strict (Tygerberg, WHO 5th) and Non-Strict Criteria
- Understand common problems in classifying sperm and ways to detect and prevent them
- Construct and use and calculate control charts
- Create measures to identify common and special causes of variation and how to reduce them
- Describe new reference limits and reference populations

Faculty

Aniela Bollendorf, MT
Anna Bort
Dean Morbeck, PhD, HCLD
Susan Rothmann, PhD, HCLD

Andrology Laboratories Committee

Dean Morbeck, PhD; Rochester, MN (Chair)
Aniela Bollendorf, MT; Philadelphia, PA
Anna Bort; Cleveland, OH
David S. Karabinus, PhD, HCLD; Fairfax, VA
Charles H. Muller, PhD; Seattle, WA
Susan A. Rothmann, PhD, HCLD; Cleveland, OH
Steven M. Schrader, PhD; Cincinnati, OH
Suresh C. Sikka, PhD, HCLD; New Orleans, LA

For more information email the workshop director at
morbeck.dean@mayo.edu

AAB Peer CEU – Approval Pending

Program Schedule on Reverse Side



Andrology Lab Workshop
Sperm Morphology: Interactive Instruction of a
New Rational Classification Method
April 21 – 22, 2012

Chair: Dean Morbeck, PhD, HCLD

SATURDAY, APRIL 21, 2012

7:00 a.m. – 7:00 p.m. Registration/Information Desk Open

Location: Grand Salon Foyer

8:00 a.m. – 8:30 a.m. Continental Breakfast

8:30 a.m. – 9:30 a.m. History of Sperm Morphology Classification Systems and Why They Have Failed; Introduction to Workshop Methods

Susan Rothmann, PhD, HCLD
 Fertility Solutions Inc.

9:30 a.m. – 10:00 a.m. Classification Algorithm 101

Anna Bort
 Fertility Solutions Inc.

10:00 a.m. – 10:15 a.m. Break

10:15 a.m. – 11:00 a.m. Interactive Algorithm Instruction 1

Anna Bort
 Fertility Solutions Inc.
 Aniela Bollendorf, MT
 Cooper Institute for Reproductive
 Hormonal Disorders

11:00 a.m. – 11:20 a.m. Practice with Virtual Smears

Participants

11:20 a.m. – 11:45 a.m. Interactive Review of Virtual Smears

Anna Bort
 Fertility Solutions Inc.
 Aniela Bollendorf, MT
 Cooper Institute for Reproductive
 Hormonal Disorders

11:45 a.m. – 1:15 p.m. Lunch – Lab Science Forum

Joseph Alukal, MD
 NYU School of Medicine

1:30 p.m. – 2:20 p.m. Interactive Instruction 2

Anna Bort
 Fertility Solutions Inc.

2:20 p.m. – 2:50 p.m. Practice with Virtual Smears

Participants

2:50 p.m. – 3:00 p.m. Break

3:00 p.m. – 3:30 p.m. Interactive Review of Virtual Smears

Anna Bort
 Fertility Solutions Inc.
 Aniela Bollendorf, MT
 Cooper Institute for Reproductive
 Hormonal Disorders

3:30 p.m. – 4:30 p.m.

Reference Limits and Classification Problems

Dean Morbeck, PhD, HCLD
 Mayo Clinic

SUNDAY, APRIL 22, 2012

7:00 a.m. – 8:00 a.m.

Continental Breakfast

8:00 a.m. – 9:00 a.m.

Quality Control – Understanding QC Requirements and Construction & Use of Control Charts- Strategies to Prevent and Correct Classification Drift and Shift

Susan Rothmann, PhD, HCLD
 Fertility Solutions Inc.

9:00 a.m. – 9:30 a.m.

Distinguished Andrologist Award/Break

9:30 a.m. – 10:00 a.m.

Difficult Classifications

Anna Bort
 Fertility Solutions Inc.
 Aniela Bollendorf, MT
 Cooper Institute for Reproductive
 Hormonal Disorders

10:00 a.m. – 10:30 a.m.

Practice with Virtual Smears Participants

10:30 a.m. – 10:45 a.m.

Break – Visit Exhibits

10:45 a.m. – 11:30 a.m.

Interactive Review of Difficult Classifications

Anna Bort
 Fertility Solutions Inc.

11:45 a.m. – 12:00 p.m.

Wrap-Up Discussion and Q&A Panel

Program and registration for the 2012 Andrology Laboratory Workshop are available online at <http://www.andrologysociety.org>

Registration Fees*

	<u>On and Before 4/2/12</u>	<u>After 4/2/12</u>
Sperm Morphology and Quality Control (Saturday and Sunday)	\$550	\$610

Lab Science Forum Lunch included in ALW registration fee.

American Society of Andrology
 Two Woodfield Lake
 1100 East Woodfield Road, Suite 520
 Schaumburg, IL 60173
 Phone: (847) 619-4909
 Fax: (847) 517-7229
 Email: info@andrologysociety.org
 Website: www.andrologysociety.org



Sponsors

American Society of Andrology
 Fertility Solutions, Inc.